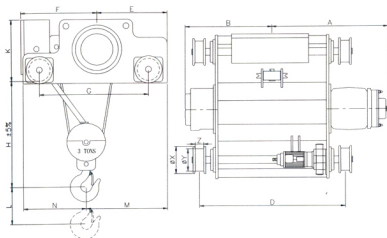


# BIG ELEPHANT WIRE ROPE HOIST

TYPE : DOUBLE-RAIL • SPEED : SINGLE SPEED (SLOW)



CAP		2		3		5		7.5		10		15		20		25		30			
Lift		6(L)	9(M)	6(L)	9(M)	6(L)	9(M)	6(L)	9(M)	6(L)	9(M)	6(L)	9(M)	6(L)	9(M)	6(L)	9(M)	6(L)	9(M)		
Holding	M/min	50Hz	3.0	3.9	2.9	3.0	2.5	2.5	2.5	3.0	3.0	3.0	3.0	3.0	3.0	3.0	3.0	3.0	3.0	3.0	
		60Hz	3.6	3.5	3.5	3.6	3.0	3.0	3.0	3.0	3.0	3.0	3.0	3.0	3.0	3.0	3.0	3.0	3.0	3.0	3.0
	Kw	50Hz	1.5	3.7	5.5	5.5	7.5	11	11	15	18.5	22	25	25	25	25	25	25	25	25	25
		60Hz	1.5	3.7	5.5	5.5	7.5	11	11	15	18.5	22	25	25	25	25	25	25	25	25	25
Traversing	M/min	50Hz	16	15	15	13	13	13	13	12	12	12	12	12	12	12	12	12	12	12	
		60Hz	19	18	18	16	16	16	15	15	15	15	15	15	15	15	15	15	15	15	
	Kw	50Hz	0.37	0.37	0.75	0.75	1.1	1.1	1.5	2.2	2.2	2.2	2.2	2.2	2.2	2.2	2.2	2.2	2.2	2.2	
		60Hz	0.37	0.37	0.75	0.75	1.1	1.1	1.5	2.2	2.2	2.2	2.2	2.2	2.2	2.2	2.2	2.2	2.2	2.2	
Wire rope	Diameter		Ø8	Ø10	Ø12	Ø14	Ø16	Ø20	Ø22.4	Ø25	Ø18										
	Struct		6 X 37										6 X 42(2)								
	Nos		4										8								
Ed percent			High / Low speed : 40% / 25% ED (JEM 1393 II)																		
Ambient temperature			-10°C to 40°C																		
Protective construction			Weather proof type (Attach rain cover if using outdoors) JP 44 (IP 54) equivalent																		
Power supply			3Ø 220V-600V 60Hz/50Hz																		

CAP	TYPE	Approximate Dimension (mm)													Kg	
		L	A	B	D	E	F	G	K	H	N	M	X	Y		Z
2 T	BWB-020	6	525	460	650	360	550	584	310	520	506	404	150	120	40	235
		9	600	535	800											265
3 T	BWB-030	6	600	435	700	410	445	640	365	630	391	474	160	130	50	375
		9	675	510	850											415
5 T	BWB-050	6	735	525	800	460	540	765	435	710	473	527	180	150	50	520
		9	800	590	950											585
		12	900	690	1150											650
7.5 T	BWB-075	6	790	555	800	530	570	865	495	825	505	595	200	170	60	870
		9	900	665	1050											940
		12	1010	775	1250											1010
10 T	BWB-100	6	975	715	950	545	605	900	560	885	481	669	220	180	60	1020
		9	1025	765	1100											1110
		12	1075	815	1200											1200
		6	970	750	950											1785
15 T	BWB-150	9	1070	850	1150	665	635	1000	640	1110	540	760	250	210	60	1875
		12	1150	930	1300											1965
		6	1025	780	1000											2320
20 T	BWB-200	9	1125	880	1200	750	750	1150	725	1030	674	826	290	250	60	2420
		12	1225	980	1400											2520
		9	1290	915	1300											3595
25 T	BWB-250	12	1390	1015	1500	800	870	1300	860	1155	732	938	320	275	60	3745
		9	1400	1340	1600											3900
30 T	BWB-300	12	1500	1440	1800	910	930	1450	880	1235	866	974	350	300	70	4100
		9	1400	1340	1600											3900